

400W / 500W Series Display Interfaces



Pilot's Guide Addendum

- L-3 STORMSCOPE® WX-500 Weather Mapping Sensor
- L-3 SKYWATCH® Traffic Advisory System (Model SKY497)
- L-3 SKYWATCH® HP Traffic Advisory System (Model SKY899)
- Bendix/King® KTA870 TAS/KMH880 Multi-Hazard Awareness System
- Ryan TCAD 9900B and 9900BX

This Pilot's Guide Addendum is written for:

- Garmin GPS 400W, GNC 420W/420AW, and GNS 430W/430AW Main System Software Versions 2.00, 3.00, and later
- Garmin GPS 500W & GNS 530W/530AW Main System Software Versions 2.00, 3.00, and later

Some differences in operation may be observed when comparing the information in this manual to earlier or later software versions.

© 2009 Garmin Ltd. or its subsidiaries. All Rights Reserved.

Garmin International, Inc., 1200 East 151st Street, Olathe, KS 66062, U.S.A.
Tel. 913/397.8200 or 800/800.1020 Fax 913/397.8282

Garmin AT, Inc., 2345 Turner Rd., S.E., Salem, Oregon 97302, U.S.A.
Tel: 503/581.8101 Fax: 503/364.2138

Garmin (Europe) Ltd., Liberty House, Bulls Copse Road, Hounslow Business Park, Southhampton, SO40 9RB, U.K.
Tel. +44 (0) 870 850 1243 Fax +44 (0) 238 052 4004

Garmin Corporation, No. 68, Jangshu 2nd Road, Shijr, Taipei County, Taiwan
Tel. 886/2.2642.9199 Fax 886/2.2642.9099

Except as expressly provided herein, no part of this addendum may be reproduced, copied, transmitted, disseminated, downloaded or stored in any storage medium, for any purpose without the express prior written consent of Garmin. Garmin hereby grants permission to download a single copy of this manual and of any revision to this manual onto a hard drive or other electronic storage medium to be viewed and to print one copy of this manual or of any revision hereto, provided that such electronic or printed copy of this manual or revision must contain the complete text of this copyright notice and provided further that any unauthorized commercial distribution of this manual or any revision hereto is strictly prohibited.

Information in this document is subject to change without notice. Garmin reserves the right to change or improve its products and to make changes in the content without obligation to notify any person or organization of such changes or improvements.

January 2009

Part Number 190-00356-31 Rev. D

Printed in U.S.A.



Garmin® is a registered trademark of Garmin Ltd. or its subsidiaries and may not be used without the express permission of Garmin Ltd. or its subsidiaries. STORM-SCOPE® and SKYWATCH® are registered trademarks of L-3 Avionics Systems, Inc. Bendix/King® is a registered trademark of Honeywell International, Inc.



CAUTION: The Global Positioning System is operated by the United States government, which is solely responsible for its accuracy and maintenance. The system is subject to changes that could affect the accuracy and performance of all GPS equipment. Although the Garmin 400W/500W Series units are precision electronic NAVigation AIDs (NAVAIDs), any NAVAID can be misused or misinterpreted and therefore become unsafe.



CAUTION: Use the 400W/500W Series units at your own risk. To reduce the risk of unsafe operation, carefully review and understand all aspects of the Owner's Manual and the Flight Manual Supplement, and thoroughly practice basic operation prior to actual use. When in actual use, carefully compare indications from the unit with all available navigation sources, including the information from other NAVAIDs, visual sightings, charts, etc. For safety, always resolve any discrepancies before continuing navigation.



CAUTION: Use the Garmin 400W/500W Series units and the Traffic/Weather Interface at your own risk. To reduce the risk of unsafe operation, thoroughly practice basic operation prior to actual use. When in actual use, carefully compare indications from the Garmin 400W/500W Series Unit with all available navigation sources, including the information from other NAVAIDs, visual sightings, charts, etc. For safety, always resolve any discrepancies before continuing navigation. The altitude calculated by the Garmin 400W/500W Series Unit is the geometric height above mean sea level and could vary significantly from the altitude displayed by pressure altimeters in the aircraft.



CAUTION: The Jeppesen database incorporated in the Garmin 400W/500W Series units must be updated regularly in order to ensure that its information is current. Updates are released every 28 days. A database information packet is included in your Garmin 400W/500W Series unit package. Pilots using an out-of-date database do so entirely at their own risk.



CAUTION: The Traffic and Weather information contained in this Pilot's Guide Addendum is not intended to replace the documentation that is supplied with the applicable Garmin 400W/500W Series unit. The user of the Traffic and Weather Interface should know how to operate the 400W/500W series unit and be knowledgeable about the information in the 400W/500W Pilot's Guides.



NOTE: This Pilot's Guide Addendum is not intended to replace the documentation that is supplied with the Garmin 400W/500W Series unit and the applicable weather/traffic system.

Table of Contents

SECTION 1: INTRODUCTION.....3

SECTION 2: L-3 STORMSCOPE INTERFACE4

L-3 STORMSCOPE Description 4
 Power-Up Self-Test 4
 User-Initiated Test 4
 Displaying Storm Data on the Map Page 5
 Clearing the Map Page..... 7
 Lightning Page—400W Series..... 8
 Lightning Page—500W Series..... 8
 Lightning Display..... 9
 Lightning Display Interpretation 9

L-3 STORMSCOPE®
 WX-500 Weather Mapping Sensor

SECTION 3: SKYWATCH INTERFACE..... 10

Introduction 10
 SKYWATCH Description 10
 Power-up Self-Test..... 10
 User-initiated Test..... 11
 Voice Announcements 11
 Switching Between Standby and Operating Modes..... 11
 Altitude Display Mode 12
 Traffic Page 12
 Traffic Warning Window..... 12
 Traffic Page Display Range..... 13
 Configuring Traffic Data on the Map Page 13
 Highlighting Traffic Data Using Map Panning..... 14
 Monitoring Traffic 14
 Failure Response 15
 Description of Traffic Advisory Criteria 15

L-3 SKYWATCH®
 Traffic Advisory System (Model SKY497)
 HP Traffic Advisory System (Model SKY899)

Bendix/King
 KTA870 TAS/KMH880 Multi-Hazard Awareness System

SECTION 4: RYAN TCAD INTERFACE 16

Ryan TCAD Description..... 16
 Operator Controls and Basic Displays..... 16
 Configuring TCAD Data on the Map Page 17
 Monitoring Traffic 18
 Highlighting Traffic Data Using Map Panning..... 18
 TCAD Setup Page 18
 Traffic Page Fields..... 19
 Air Shield 20
 Traffic Warning Window..... 20
 Threat Acquisition 20
 Audible and Visible Alerts 20
 Fault Displays..... 20
 Limitations 20

RYAN TCAD
 Model 9900B
 Model 9900BX)

SECTION 1: INTRODUCTION

The Garmin 400W/500W Series units provide the display interface and control for the following traffic and weather devices/systems:

- L-3 STORMSCOPE® WX-500 Weather Mapping Sensor
- L-3 SKYWATCH® Traffic Advisory System (Model SKY497)
- L-3 SKYWATCH® HP Traffic Advisory System (Model SKY899)
- Bendix/King® KTA870 TAS/KMH880 Multi-Hazard Awareness System
- Ryan TCAD 9900B and 9900BX

The interface capability allows traffic and weather data to be shown on the 400W/500W series color display, which gives you the ability to quickly identify traffic and weather hazards relative to your aircraft.

SECTION 2: L-3 STORMSCOPE INTERFACE

L-3 STORMSCOPE Description



NOTE: Refer to the WX-500 Pilot's Guide for a detailed description of the WX-500 STORMSCOPE.

The L-3 STORMSCOPE WX-500 Weather Mapping Sensor is a passive weather avoidance system that detects electrical discharges associated with thunderstorms within a 200-NM radius of the aircraft. The STORMSCOPE measures relative bearing and distance of thunderstorm-related electrical activity and reports the information to the display. **Interfaces are currently only available for the WX-500 STORMSCOPE System.**



The 400W/500W Series units perform a self-test during power-up to ensure proper operation of the applicable interface components.

Power-Up Self-Test

The power-up self-test ensures that the WX-500 functions are operating properly. An error message is displayed on the Message Page if data is no longer being received.

User-Initiated Test

In addition to the power-up test, the WX-500 performs a continuous self-test. This continuous self-test is performed several times per minute. A user-initiated test can also be performed. The WX-500 Pilot's Guide lists all of the possible faults, probable causes, and recommended actions if system failures are noted.



In addition to the power-up test, the user can perform a self-test that is executed through the 400W/500W Series unit display.

To perform a user-initiated test:

1. From the default Nav Page, turn the **small right** knob to select the Lightning (LTNG) Page.
2. Press **MENU** to display the Page Menu.
3. Turn the **small right** knob to select "Self-Test?" and press **ENT**.

Displaying Storm Data on the Map Page

The Map Page displays cell or strike information using yellow lightning strike symbology overlaid on a moving map. This added capability improves situational awareness, which in turn makes it much easier for the pilot to relate storm activity to airports, NAVAIDs, obstacles and other ground references.

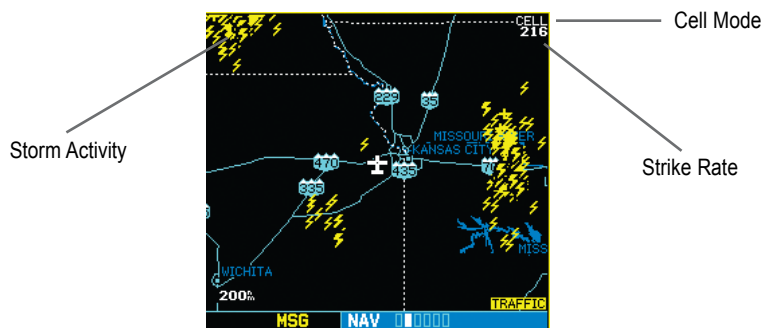
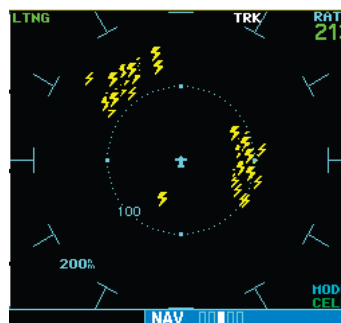


NOTE: Storm data is displayed on the Map Page only if aircraft heading is available.

In normal operation, the current mode and rate are displayed in the top right corner of the Map Page and the bottom right corner of the Lightning Page. The mode is described by the word “STRIKE” when in strike mode, or “CELL” when in cell mode.



NOTE: Cell mode uses a clustering program to identify clusters of electrical activity that indicate cells. Cell mode is most useful during periods of heavy storm activity. Displaying cell data during these periods frees the user from sifting through a screen full of discharge points and helps to better determine where the storm cells are located.



Storm Data Displayed on the Map Page

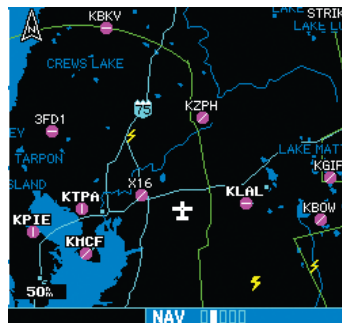
The strike data display phases are:

1. Lightning Symbol (latest strikes; less than one minute; a black guard band is placed around the strike symbol during the first six seconds of display).
2. Large Plus “+” sign (more than one minute old).
3. Small Plus “+” sign (more than two minutes old).
4. Strike Data is no longer displayed (after three minutes).

To configure storm data on the Map Page:

1. From the default Nav Page, turn the **small right** knob to select the Map Page.
2. Press **MENU** to display the Page Menu.
3. Turn the **small right** knob to select ‘Setup Map?’ and press **ENT**.
4. The flashing cursor highlights the GROUP field. Turn the **small right** knob to display the Map Setup Options Menu. Turn the **small right** knob to select “Weather” and press **ENT**.
5. The flashing cursor highlights “Weather” in the GROUP field. Turn the **large right** knob to select the desired lighting mode field. Turn the **small right** knob to select the desired mode and press **ENT**. Repeat for the remaining fields and options.

6. Return to the Map Page by pressing **CLR**.

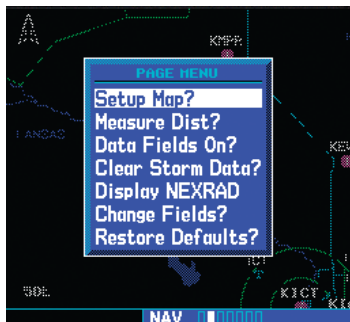


NOTE: Only the data that is viewable on the screen is included in the strike rate. Therefore, you can zoom in and see what the strike rate is locally, or you can zoom out for a bigger picture.

Also, when panning with the cursor on the Map Page, you can zoom in and isolate individual cells. Please note, however, that strike data is not typically updated on the Map Page while the panning cursor is on. Therefore, when the panned map is first displayed, the data is only a “snapshot” of conditions (as mentioned above, the strike rate will reflect viewable data only).

Clearing the Map Page

Routinely clearing the Map Page of all discharge points is a good way to determine if a storm is building or dissipating. In a building storm discharge points reappear faster and in larger numbers. In a dissipating storm discharge points appear slower and in smaller numbers.



Clearing discharge points from the Map Page.

To clear the Map Page of all discharge points:

1. From the default Nav Page, turn the **small right** knob to select the Map Page.
2. Press **MENU** to display the Page Menu. Turn the **small right** knob to select "Clear Storm Data?" and press **ENT**.

Changing the Storm Data Display Range

Storm data can be displayed on the 2000 NM zoom scale, but the data only goes out as far as the STORMSCOPE can report (200 NM). The 500 NM zoom scale will display all lightning data. Scales greater than 500 NM do not display any additional STORMSCOPE data.



Changing the storm data display range on the Map Page.

To select a storm data display range:

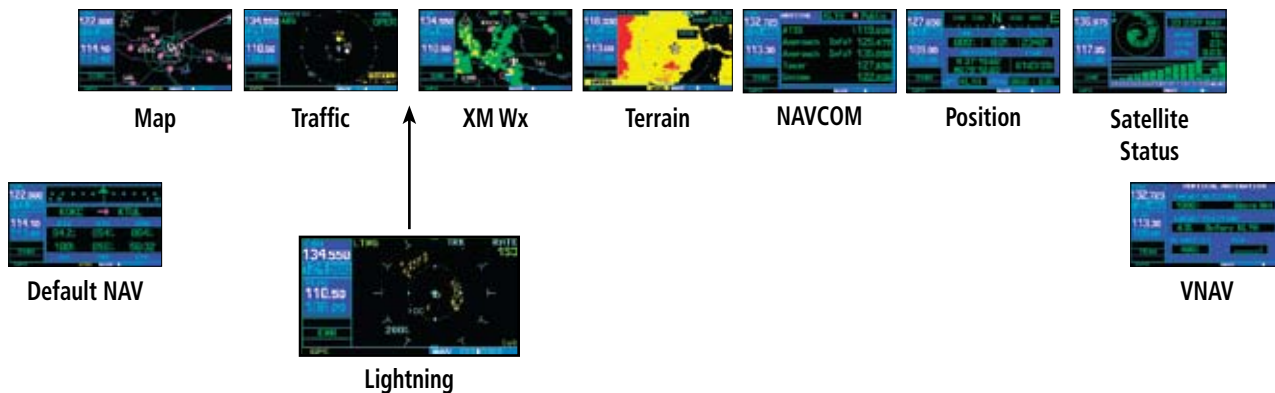
1. From the default Nav Page, turn the **small right** knob to select the Map Page. Press **MENU** to display the Page Menu.
2. Turn the **small right** knob to select "Setup Map?" and press **ENT**. Turn the **small right** knob to select the Weather Group and press **ENT**. Turn the **large right** knob to select the desired lightning symbol option. Turn the **small right** knob to select the desired range and press **ENT**.

Section 2

L-3 Stormscope Interface

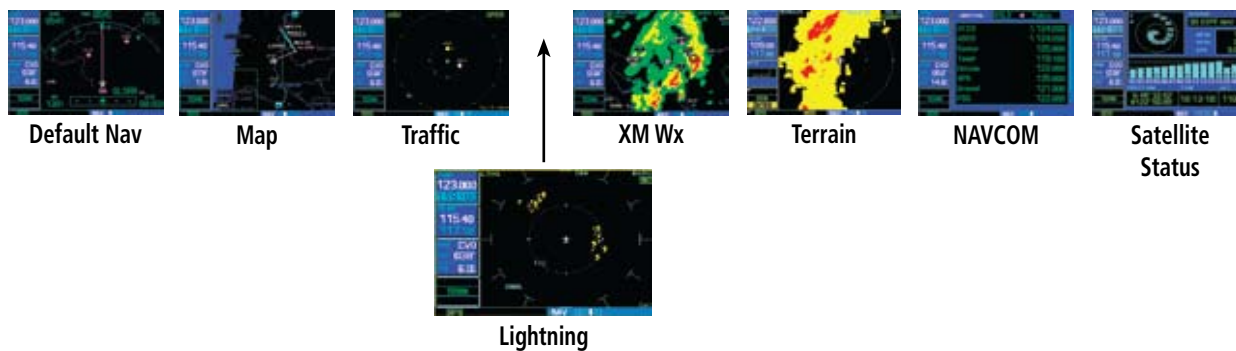
Lightning Page—400W Series

In addition to the Map Page, storm data can also be viewed on the Lightning Page. In the 400W Series, When the STORMSCOPE is connected to the unit, the Lightning Page appears after the Traffic Page in the sequence of Nav Pages.



Lightning Page—500W Series

In addition to the Map Page, storm data can also be viewed on the Lightning Page. In the 500W Series, when the STORMSCOPE is connected to the unit, the Lightning Page appears after the Traffic Page in the sequence of Nav Pages.

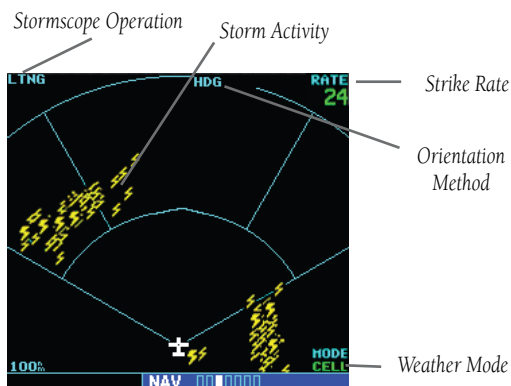


Lightning Display

The Lightning Page displays either a 360° or a 120° viewing angle. In normal operation, the current strike rate is displayed in the top right corner, accompanied in the top left corner by the word “LTNG”. When in strike mode, “Strike” is displayed in the lower right hand corner of the Weather Page and when the unit is in cell mode, “Cell” is displayed in the lower right hand corner of the Lightning Page.

To select the desired Lightning Display Mode:

1. From the default NAV Page, turn the **small right** knob to select the Lightning Page.
2. Press **MENU** to display an options menu.
3. Select the desired display angle from the options menu and press **ENT**.



Lightning Display

Lightning Display Interpretation

For lightning display interpretation, study the examples in the WX-500 Pilot's Guide that are designed to help you relate the cell or strike patterns shown on the display to the size and location of thunderstorms that may be near your aircraft.



SECTION 3: SKYWATCH INTERFACE

Introduction

With the exception of traffic display range selections, all information in this section pertaining to the display and control of the L-3 SKYWATCH (SKY 497) also applies to the L-3 SKYWATCH HP (SKY 899) and the Bendix/King KTA 870/KMH 880—this includes TCAS-like symbology. Traffic display range selections are as follows:

- SKYWATCH (SKY 497)—2 NM, 2 and 6 NM, and 6 and 12 NM.
- SKYWATCH HP (SKY 899)—2 NM, 2 and 6 NM, 6 and 12 NM, and 12 and 24 NM.
- Bendix/King KTA 870/KMH 880—2 NM, 2 and 6 NM, 6 and 12 NM, 12 and 24 NM, and 20 and 40 NM.



The Standby Screen appears when the SKYWATCH passes the power-up test. **NOTE:** when the system is in standby, the SKYWATCH does not transmit, interrogate, or track intruders aircraft.

SKYWATCH Description

Please refer to the SKYWATCH Pilot's Guide for a complete description of the SKYWATCH system.



Traffic Page showing Bendix/King KTA 870/KMH traffic near the 40 nautical mile range, at 10 o'clock above.

Power-up Self-Test

Check for the following test criteria on the Traffic Page during power-up:

1. If the SKYWATCH passes the power-up test and your aircraft has both a squat switch and is on the ground, the Standby Screen is displayed (see sidebar).
2. If the SKYWATCH passes the power-up test and your aircraft has both a squat switch and is airborne, the Traffic Page is displayed on the 6-NM display range and in the normal altitude display mode.
3. If the SKYWATCH passes the power-up test and your aircraft does not have a squat switch, the Standby Screen is displayed.
4. If the SKYWATCH continues to fail, please refer to the failure response section in the SKYWATCH Pilot's Guide on actions to take.

To begin tracking intruder aircraft

1. Turn the **cursor** on and highlight **STBY**.
2. Turn the **small right** knob to select **OPER**.
3. Press **ENT** to confirm operating mode and begin tracking intruder aircraft.



Operating Mode is confirmed by the display of "OPER" in the upper right-hand corner of the Traffic Page.



NOTE: The **FAILED** message occurs when the system detects an error and prohibits further traffic display operation as long as this message stays on the screen.

User-initiated Test



NOTE: A user-initiated test can only be performed when in standby or failed mode.

In addition to the power-up test, the SKYWATCH performs a continuous self-test. This continuous self-test is performed several times per minute. A user-initiated test of the SKYWATCH interface can also be performed.

To perform a user-initiated test:

1. Turn the **small right** knob to select the Traffic Page.
2. From the Traffic Page, press **MENU** to display the Page Menu.
3. Turn the **small right** knob to select "Self Test?" and press **ENT**.

Voice Announcements

See the SKYWATCH Pilot's Guide for information on voice announcements.

Switching Between Standby and Operating Modes

The unit must be in operating mode for traffic to be displayed. The ability to switch out of standby into operating mode on the ground is especially useful for scanning the airspace around the airport before takeoff.

To switch into Operating Mode from Standby Mode:

1. Press the **cursor** knob and highlight "STBY". Turn the **small right** knob to select "OPER?".
2. Press **ENT** to confirm and place the SKYWATCH in operating mode.



NOTE: The SKYWATCH switches out of standby into the 6-NM display range. If your aircraft has a squat switch and you do not manually switch out of standby, the SKYWATCH will automatically switch out of standby 8 to 10 seconds after takeoff.

To switch into Standby Mode from the Traffic Page:

1. Turn the **cursor** on and highlight "OPER".
2. Turn the **small right** knob to select "STBY?".
3. Press **ENT** to confirm and place the SKYWATCH in standby mode.



NOTE: If your aircraft has a squat switch, **STBY** is not displayed while you are airborne but will go into standby 24 seconds after landing. This delay allows the SKYWATCH to remain in the operating mode during a touch-and-go maneuver.

Altitude Display Mode



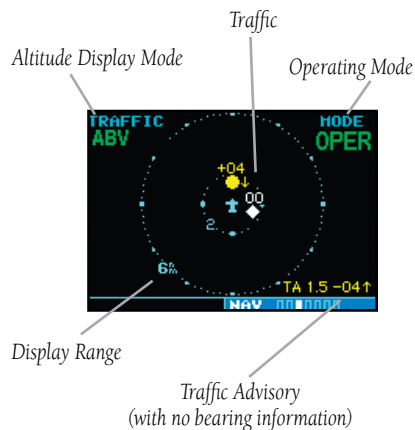
The name of the selected altitude display mode (ABV: look up, NRM: normal, BLW: look down, or UNR: unrestricted) is displayed in the upper left-hand corner of the Traffic Screen. The SKY 497 continues to track up to 30 intruder aircraft within its maximum surveillance range, regardless of the altitude display mode selected.

To change the Altitude Display Mode:

1. From the Traffic Page, turn the **cursor** on, highlight the current mode and turn the **small right knob** to cycle through the options.
2. With each turn of the knob, the screen changes to display the traffic detected within the selected altitude display range. The 400W/500W Series screen also displays unrestricted traffic (UNR) having a range of maximum specified by the SKYWATCH Pilot's Guide. Please refer to the SKYWATCH Pilot's Guide for information regarding altitude display ranges.
3. Note that confirmation is not required. The mode is changed immediately when using the **small right knob**. Turn the cursor off when selection is made.

Traffic Page

Traffic can be displayed both on the Map Page (only if heading is available) and on the Traffic Page.



Traffic Page

Traffic Warning Window

When the unit is not on the traffic page and a traffic threat is imminent, the Traffic Warning Window is displayed. The Warning Window shows a small map and can display the Traffic Page (if the user presses **ENT**) or return to the previous page (if the user presses **CLR**).



Traffic Warning Window



NOTE: The Traffic Warning Window is disabled when the aircraft ground speed is less than 30 knots or when an approach is active.



NOTE: SKYWATCH data is only displayed on the Map Page if suitable aircraft heading data is available. See the Garmin 400W or 500W Series Installation Manuals available at your authorized Garmin service center for details.

Traffic Page Display Range

You can change the display range on the Traffic Page at any time.

1. Press the **RNG Key** to cycle through the following range options:
 - SKYWATCH (SKY 497)—2 NM, 2 and 6 NM, and 6 and 12 NM.
 - SKYWATCH HP (SKY 899)—2 NM, 2 and 6 NM, 6 and 12 NM, and 12 and 24 NM.
 - Bendix/King KTA 870/KMH 880—2 NM, 2 and 6 NM, 6 and 12 NM, 12 and 24 NM, and 20 and 40 NM.

Configuring Traffic Data on the Map Page

The display of traffic information is designed to closely resemble the display symbology used by L-3 on the SKYWATCH. **Traffic is only displayed on the Map Page if aircraft heading data is available. When heading is not available, Traffic Advisories are displayed as non-bearing banners on the Map Page.**



Selections for configuring traffic data are made from the Map Setup Menu on the Map Page.

To configure traffic on the Map Page:

1. Turn the **small right** knob to select the Map Page.
2. Press **MENU** to display the Page Menu. Turn the **small right** knob to select "Setup Map?" and press **ENT**.
3. The flashing cursor highlights the **GROUP** field. Turn the **small right** knob to select Traffic and press **ENT**.
4. Turn the **large right** knob to select the desired Traffic Mode option. Turn the **small right** knob to select the desired option and press **ENT**. Repeat the step for Traffic Symbol and Traffic Label.
5. Return to the Map Page by pressing **CLR**.

Traffic mode allows the operator to choose which traffic is displayed (all traffic, traffic and proximity advisories, or traffic advisories only). The traffic symbol is the symbol used to depict the type of traffic (400W/500W Series and L-3 use the same symbology):



- Traffic Advisories (TA)—Yellow



- Proximity Advisories (PA)—White

(may be configured as Cyan)



- Other—White (may be configured as Cyan)



NOTE: Proximity Advisories (PA) are displayed as solid white diamonds (may be configured as cyan). SKYWATCH shows these PAs as "other" (hollow diamonds). PAs are defined as traffic within the 4.0-NM range, with ± 1200 feet of altitude separation, and not a traffic advisory (TA).

The traffic label is the altitude separation above or below the symbol and the vertical speed sense arrow

Section 3

Skywatch Interface

to the right of the symbol. From the Map Page, you can display traffic in a thumbnail format in any of the top three data fields (top four fields on the 500W Series) on the right side of the Map Page.



When a Traffic Advisory is active, the “Traffic” banner is displayed in the lower right corner of the Map Page.

To display Thumbnail Traffic on the Map Page

1. Turn the **small right** knob to select the Map Page.
2. Press **MENU** to display the Page Menu.
3. Turn the **small right** knob to select ‘Change Fields?’ and press **ENT**.
4. Select one of the top three fields (top four fields on the 500W Series). Select TRFC from the Select Field Type List and press **ENT**. Note that the thumbnail range defaults to 6 NM and cannot be changed.

Highlighting Traffic Data Using Map Panning

Another map page function is panning, which allows you to move the map beyond its current limits without adjusting the map scale. When you select the panning function—by pressing the **small right** knob—a target pointer flashes on the map display. A window also appears at the top of the map display showing the latitude/longitude position of the pointer, plus the bearing and distance to the pointer from your present position.



When the target pointer is placed on traffic, the traffic range and altitude separation are displayed.

To select the panning function and pan the map display:

1. Press the **small right** knob to activate the panning target pointer.
2. Turn the **small right** knob clockwise to move up, or turn it counterclockwise to move down.
3. Turn the **large right** knob clockwise to move right, or turn it counterclockwise to move left.
4. To cancel the panning function and return to your present position, press the **small right** knob.

When the target pointer is placed on traffic, the traffic range and altitude separation are displayed. The traffic is identified as:

TA: Traffic Advisory, **PA:** Proximity Advisory,

TRFC: Other Traffic

Monitoring Traffic

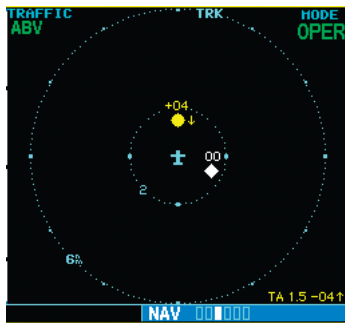
See the information in the SKYWATCH Pilot’s Guide regarding monitoring traffic on the display and the corresponding actions to take.

Failure Response

Errors indicated by a “FAILED” message on the screen prevent continued use of the SKYWATCH. Please see the L-3 SKYWATCH Pilot’s Guide for detailed information on Failure Response.

Description of Traffic Advisory Criteria

For a description of Traffic Advisory criteria and display interpretation, please see the SKYWATCH Pilot’s Guide.



The SKYWATCH Pilot’s Guide contains detailed information on traffic advisory and display interpretation.

SECTION 4: RYAN TCAD INTERFACE

All information in this section pertaining to the display and control of the Ryan 9900B TCAD also applies to the Ryan 9900BX TCAD except for the following:

- TCAS-like symbols are used in the 9900BX. TCAD symbols are used with the 9900B (see the table on page 17).
- Altitude modes are available (normal, look up, look down, unrestricted).
- Ranges are manually controlled instead of being automatically re-sized to the current shield.
- Traffic display range selections are different:
 - Ryan 9900B—range is slaved to current shield size.
 - Ryan 9900BX—1 NM, 1 and 2 NM, 2 and 6 NM, 6 and 12 NM, and 12 and 24 NM.



See the Ryan TCAD Pilot's Handbook for a description of the traffic symbols.

Ryan TCAD Description

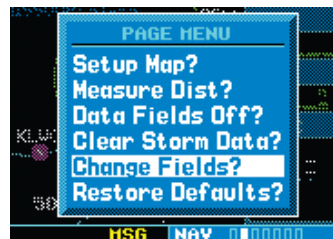


NOTE: Refer to the Ryan TCAD Pilot's Guide for a detailed description of the Ryan TCAD System.

The Ryan TCAD (Traffic and Collision Alert Device) is an on-board air traffic display used to identify potential collision threats. TCAD computes relative altitude and range of threats from nearby Mode C and Mode S-equipped aircraft. TCAD will not detect aircraft without operating transponders or those that are beyond radar coverage. TCAD, within defined limits, creates a “shield” of airspace around the aircraft that detected traffic cannot penetrate without triggering an alert.







Operator Controls and Basic Displays





If there is no communication between the 400W/500W Series unit display and the TCAD unit, a message will appear, notifying the user. After initialization, proceed with operation of the 400W/500W Series unit in a normal manner. TCAD data can be shown in a “thumbnail” view on the Map Page.



The Map Page can display TCAD traffic in any of the top three fields (or top four fields on a 500W Series unit) located on the right-hand side of the display.

TCAD data also displays on the Traffic Page and Map Pages, if heading data is available. The symbols for closing and opening traffic shown on both the Map Page and the Traffic Page are identical to those shown on the Ryan TCAD:

9900B (TCAD) Symbols	
TRFC (White)—Altitude separation >500 feet, steady altitude separation (color may be configured as cyan)	
TA (Yellow)—Altitude separation ≤500 feet, steady altitude separation	
TRFC (White)—Altitude separation >500 feet, closing (color may be configured as cyan)	
PA (White)—Altitude separation ≤500 feet, opening (color may be configured as cyan)	
TRFC (White)—Altitude separation >500 feet, opening (color may be configured as cyan)	
TA (Yellow)—Altitude separation ≤500 feet, closing	

9900BX (TCAS) Symbols	
Traffic Advisory	
Proximity Advisory (color may be configured as cyan)	
Other Traffic (color may be configured as cyan)	
Out-of-Range Traffic Advisory	

Configuring TCAD Data on the Map Page

The display of traffic information closely resembles the display symbology used by the Ryan TCAD. **Traffic data is only displayed on the Map Page if heading data is available.**



You can configure TCAD data on the Map Page using the Map Setup Menu.

To configure Traffic on the Map Page:

1. Turn the **small right** knob to select the Map Page.
2. Press **MENU** to display the Page Menu.
3. Use the **small right** knob to select "Setup Map?" and press **ENT**.
4. The flashing cursor highlights the GROUP field. Turn the **small right** knob to display the Map Setup Options Menu. Turn the **small right** knob to select Traffic and press **ENT**.
5. Turn the **large right** knob to select the desired Traffic Mode option. Turn the **small right** knob to select the desired option and press. Repeat the step for Traffic Symbol and Traffic Label.
6. Return to the Map Page by pressing **CLR**.

The Map Page has the ability to display traffic in a thumbnail format in any of the top three fields (top four fields on a 500W Series unit) on the right-hand side of the Map Page.

To display Thumbnail Traffic on the Map Page:

1. Turn the **small right** knob to select the Map Page.
2. Press **MENU** to display the Page Menu.
3. Use the **small right** knob to select "Change Fields?" and press **ENT**.
4. Select one of the top three fields (top four fields on a 500W Series unit). Select **TRFC** from the Select Field Type List and press **ENT**. Note that the thumbnail range defaults to 6 NM and cannot be changed for TCAD 9900BX and slaves to the current shield size for TCAD 9900B.

Monitoring Traffic

Refer to the information in the TCAD Pilot's Guide regarding monitoring traffic on the display and the corresponding actions to take.

Highlighting Traffic Data Using Map Panning

Panning is another map page function, which allows you to move the map beyond its current limits without adjusting the map scale. When you select the panning function—by pressing the small right knob—a target pointer flashes on the map display. A window also appears at the top of the map display showing the latitude/longitude position of the pointer, plus the bearing and distance to the pointer from your present position.



When the target pointer is placed on traffic, the traffic range, squawk code (if available), and tail number (if available) are displayed.

To use the map panning feature:

1. Press the **small right** knob to activate the panning target pointer.
2. Turn the **small right** knob to move up (turn clockwise), or down (turn counterclockwise).
3. Turn the **large right** knob to move right (turn clockwise), or left (turn counterclockwise).
4. To cancel map panning and return to your present position, press the **small right** knob.

When the target pointer is placed on traffic, the traffic range, altitude separation, squawk code (if available), and tail number (if available) are displayed. The traffic is identified as follows:

TA: Traffic Advisory. This is traffic with 500 feet, or less, of altitude separation that is converging or maintaining altitude separation.

PA: Proximity Advisory. This is traffic with 500 feet of altitude separation that is not a TA.

TRFC: Other traffic.

TCAD Setup Page

The Ryan TCAD Setup Page is accessed from the Traffic Page. The TCAD Setup Page allows you to configure traffic data. The definitions of the available options are listed in the TCAD Pilot's Handbook.



Ryan TCAD Setup Page (9900B only)

To change a TCAD setup option:

1. Turn the **small right** knob to select the Traffic Page. Press **MENU** to display the Page Menu. Turn the **small right** knob to select "Setup?" and press **ENT**.
2. The flashing cursor highlights the Mode field. Turn the **small right** knob to select the mode and press **ENT**. The mode selection determines which shield definition to display and change. Turn the **large right** knob to select the desired remaining options fields. Turn the **small right** knob to select the desired option and press **ENT**.
3. Return to the Traffic Page by pressing **CLR**.

Traffic Page Fields

There are two selectable fields on the Traffic Page: the Operating Mode Field and the Barometric Pressure Field. The Operating Mode Field selects the TCAD operating mode. Please refer to the TCAD Pilot's Handbook for a complete description of all modes of operation. For the 9900BX model, this field is replaced with the SKYWATCH style altitude mode.

TCAD 9900B Operating Modes:

GND: ground mode

TML: terminal mode

STD: standard mode

ENR: en route mode

UNR: unrestricted mode

The modes **APR** (approach) and **DEP** (departure), are displayed when in that mode, but are not manually selectable.

To select the Operating Mode:

1. From the Traffic Page, press **CRSR** to highlight the operating mode field. Turn the **small right** knob to select the desired operating mode and press **ENT**.



NOTE: *The traffic display range is automatically set to the shield size and cannot be changed (9900B only).*

The second selectable field, located in the upper right-hand corner of the display, is the Barometric Pressure field, which displays the Barometric Pressure in inches of mercury. The Barometric Pressure field on the Traffic Page allows you to set the barometric pressure in the Ryan TCAD unit. Please refer to the TCAD Pilot's Handbook for a detailed description of this feature.



The Barometric Pressure field is located in the upper right-hand corner of the Traffic Page.

To change the Barometric Pressure:

1. From the Traffic Page, press the **cursor** to highlight the Operating Mode field. Turn the **large right** knob to select the Barometric Pressure Field. Use the **small right** knob to select the desired value and press **ENT**. Note: When editing the value, use the **large right** knob to select the digit to edit.
2. Exit the field by pressing the **CRSR** button.

When the TCAD 9900BX model is interfaced there is an additional annunciation in the lower left hand corner of the Traffic Page. This indicates when the TCAD unit is in approach mode (APR), or if the approach is armed (APR ARM).

Air Shield

Please refer to the TCAD Pilot's Handbook for a detailed description of the Air Shield.

Traffic Warning Window

When the Traffic page is not displayed and a traffic threat becomes imminent, the Traffic Warning Window will be displayed. The Warning Window shows a small map and can display the Traffic Page (if the user presses **ENT**) or return to the previous page (if the user presses **CLR**).



Ryan TCAD Traffic Warning Window



NOTE: The Traffic Warning Window is disabled when the aircraft ground speed is less than 30 knots or when an approach is active.

Threat Acquisition

Please, see the TCAD Pilot's Handbook.

Audible and Visible Alerts

Voice and tones are used to alert the pilot. The alert descriptions used by TCAD are listed in the TCAD Pilot's Handbook. Voice is used only during the highest level of alerting; otherwise, tone is used. The voice alerting can be turned on or off either on the TCAD Setup Page or on the configuration pages. See the Garmin 400W/500W Series Installation Manual available at your authorized Garmin Service Center (only for the 9900 model).

Fault Displays

If the 400W/500W Series unit fails to detect the Ryan TCAD or if it detects invalid data from the TCAD, the traffic screen will display the message, "NO DATA".

Limitations

Please see the TCAD Pilot's Handbook for limitations of the TCAD system.



© 2009 Garmin Ltd. or its subsidiaries

Garmin International, Inc.
1200 East 151st Street, Olathe, Kansas 66062, U.S.A.

Garmin AT, Inc.
2345 Turner Rd., S.E., Salem, Oregon 97302, U.S.A.

Garmin (Europe) Ltd.
Liberty House, Bulls Copse Road, Hounslow Business Park,
Southampton, SO40 9RB, U.K.

Garmin Corporation
No. 68, Jangshu 2nd Road, Shijr, Taipei County, Taiwan

www.garmin.com

Part Number 190-00356-31 Rev. D