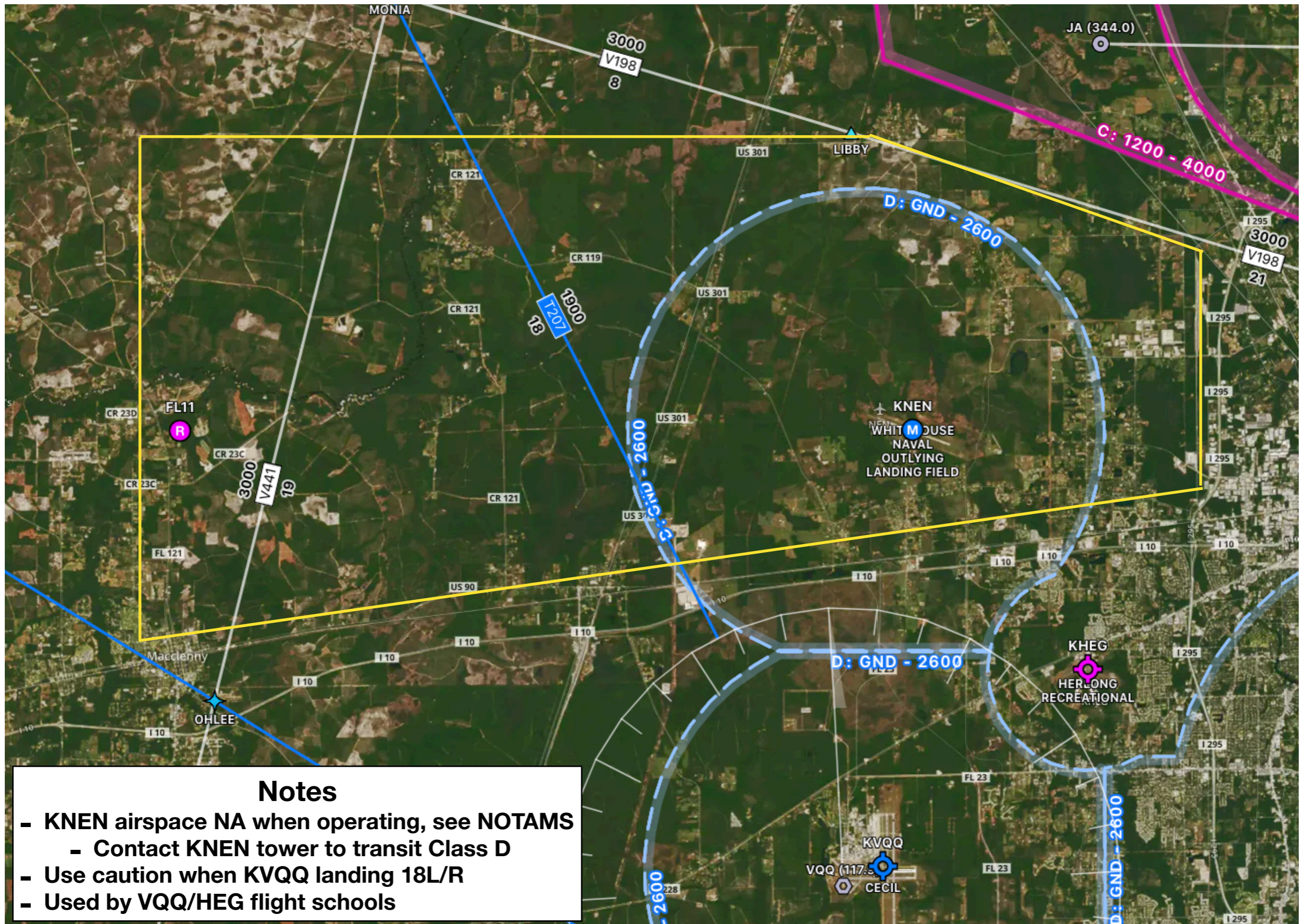


JNFC STUDENT TRAINING AREAS



Student Training Areas
Student Solo Training Areas

Area A: Whitehouse



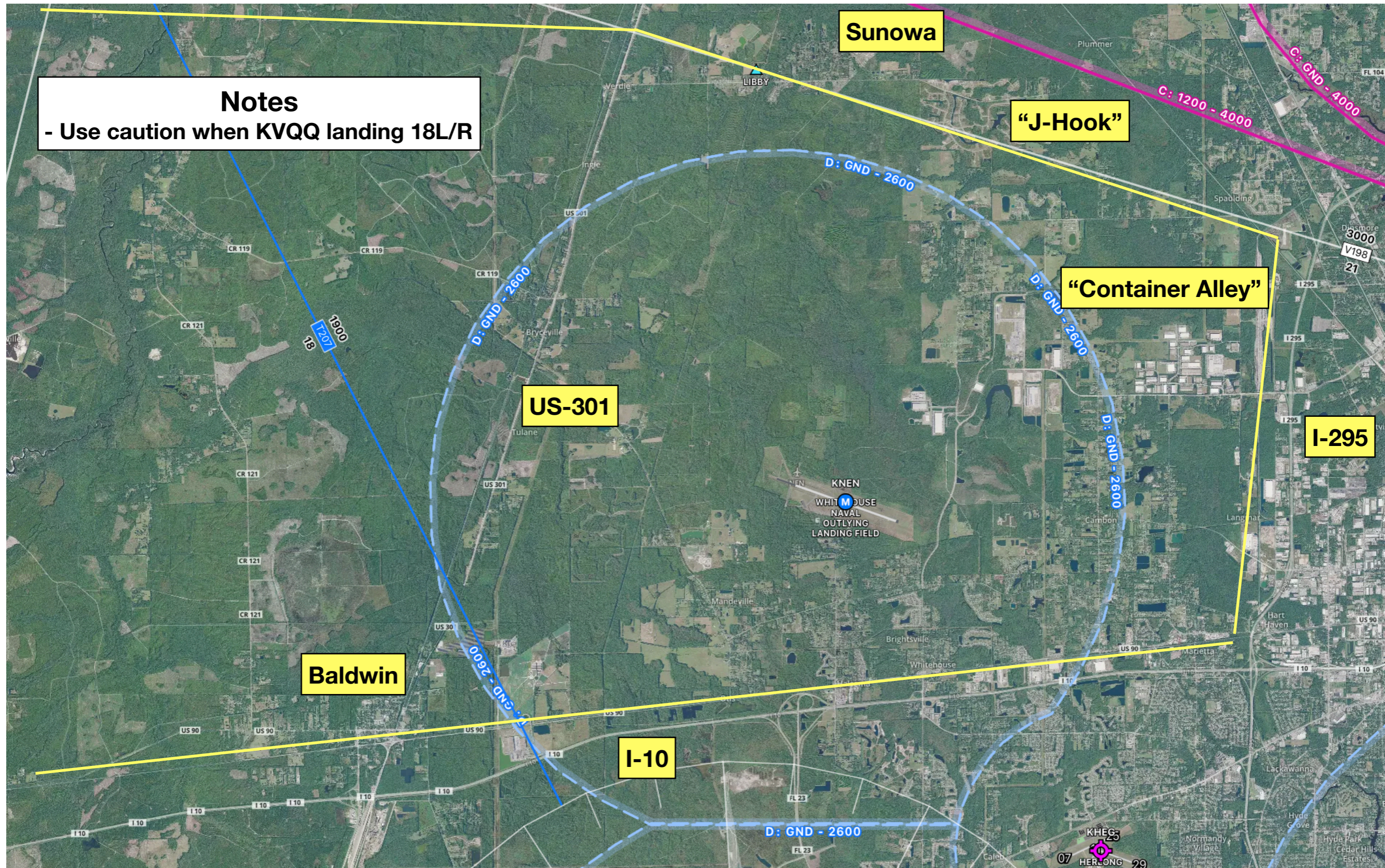
Notes

- KNEN airspace NA when operating, see NOTAMS
 - Contact KNEN tower to transit Class D
- Use caution when KVQQ landing 18L/R
- Used by VQQ/HEG flight schools

Area A: Whitehouse

Notes

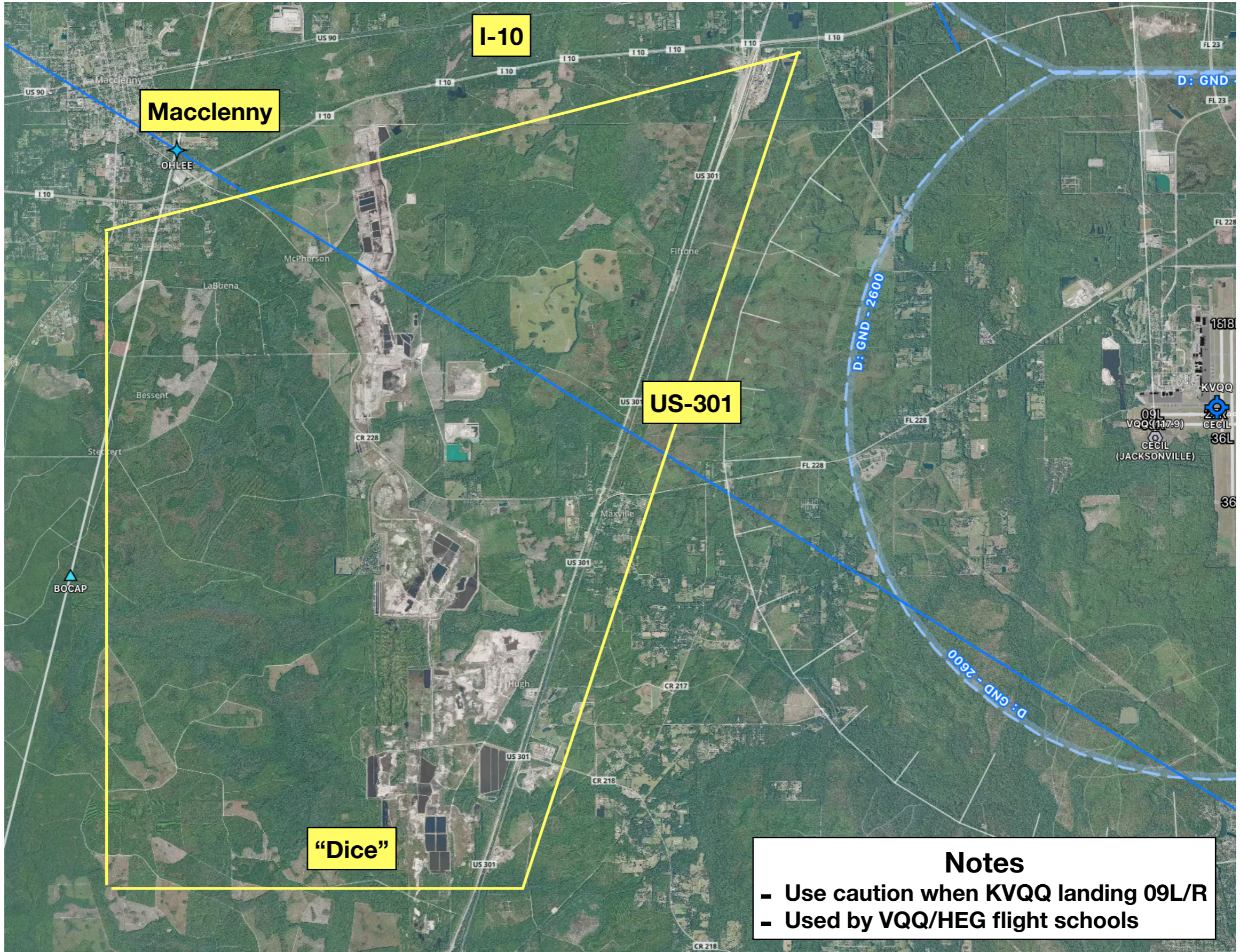
- Use caution when KVQQ landing 18L/R



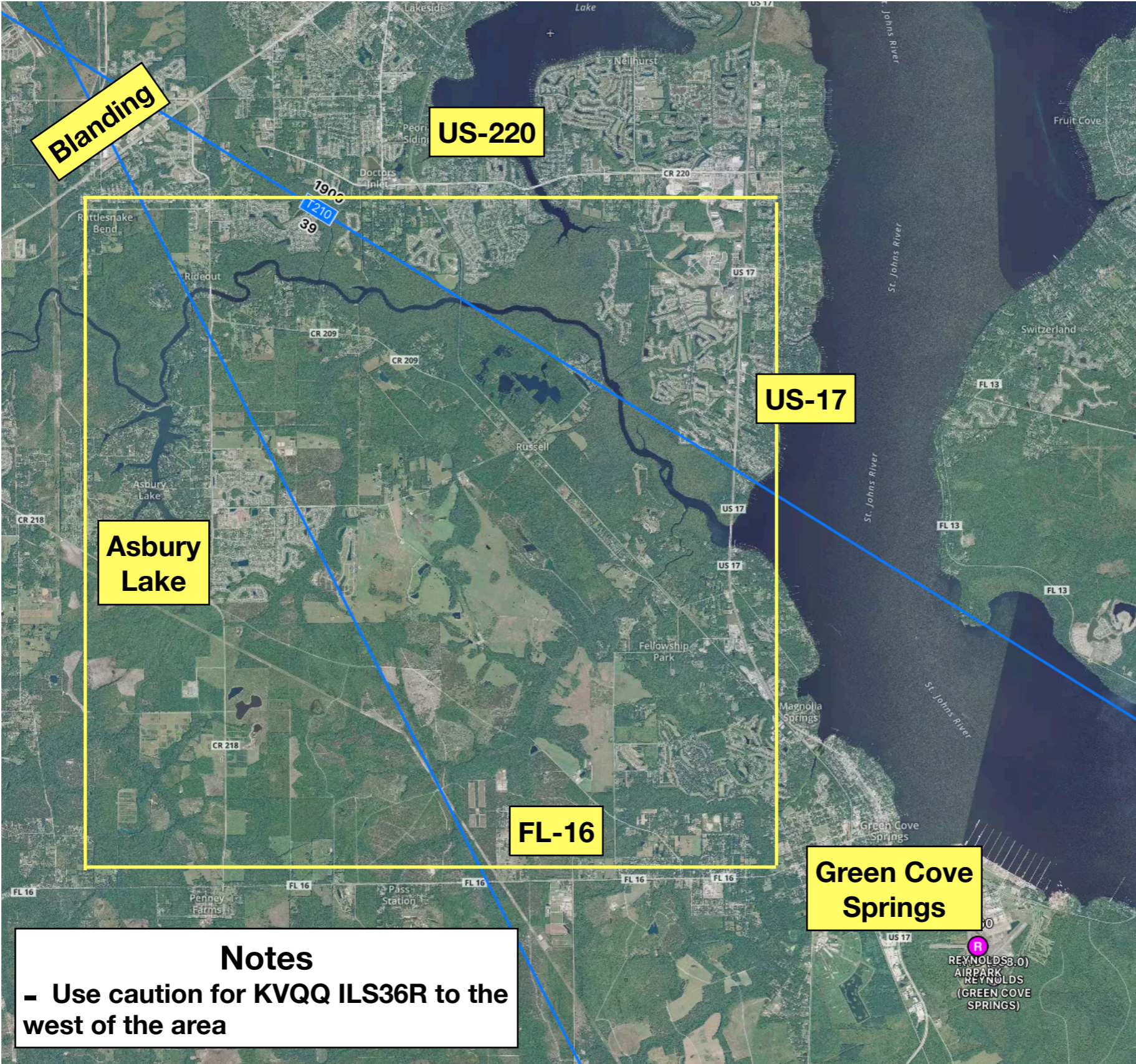
Area A: Whitehouse



Area B: Cecil

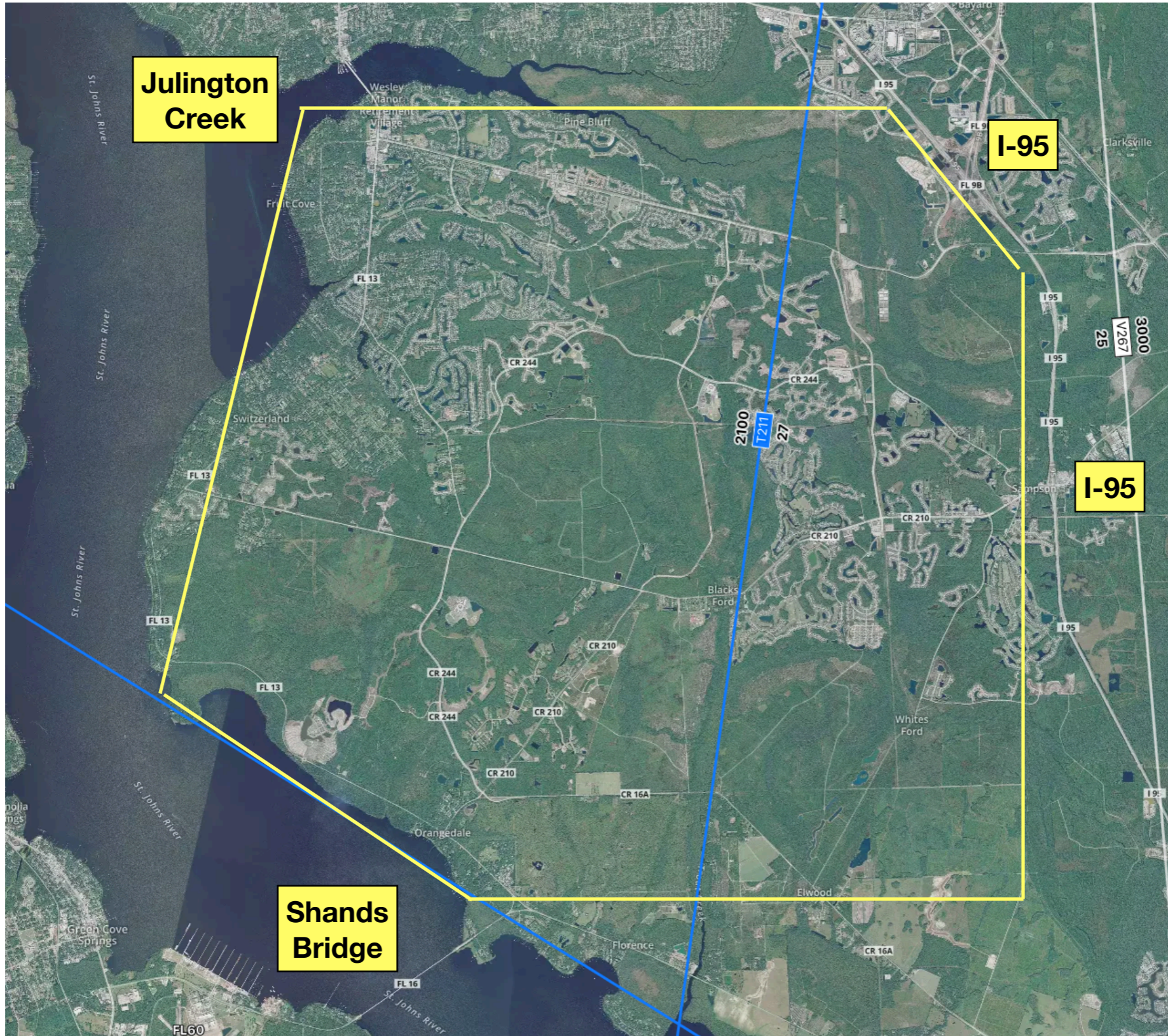


Area C: Asbury Lake

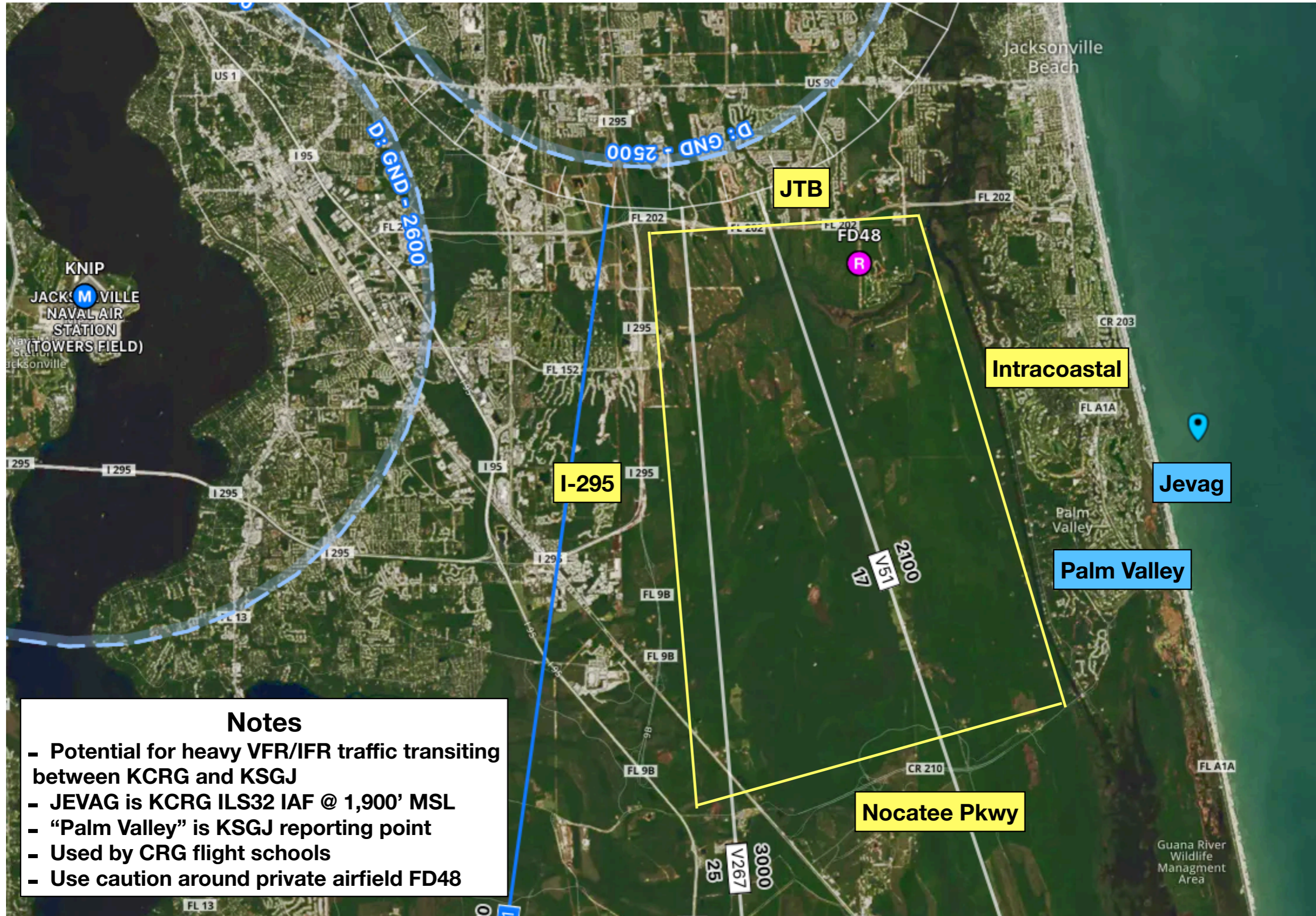


Notes
- Use caution for KVQQ ILS36R to the west of the area

Area D: Julington Creek



Area E: St. Johns



Notes

- Potential for heavy VFR/IFR traffic transiting between KCRG and KSGJ
- JEVAG is KCRG ILS32 IAF @ 1,900' MSL
- "Palm Valley" is KSGJ reporting point
- Used by CRG flight schools
- Use caution around private airfield FD48

Area E: St. Johns

